
YOUR GUIDE TO BETTER HEALTH: OUR PACKAGES

2026

We are your health partners, dedicated to your well-being every step of the way. Explore our range of specialised healthcare packages and programmes tailored to your needs. Our dedicated team is always ready to assist you in managing your needs. Discover your path to a healthier, happier you.

Available 24/7 for walk-ins at the Accident & Emergency Department

Wound Care Clinic

Professional wound care and wound management service

Types of Wound Management:

- ✓ Diabetic Wound
- ✓ Surgical Wounds*
- ✓ Infectious Wounds
- ✓ Chronic / Non-Healing Wounds
- ✓ Vascular Leg Ulcers
- ✓ Pressure Ulcers
- ✓ Stoma Care



* Terms and Conditions Applied

For more information, kindly give us a call at 085 - 649 999 (General / Emergency Line)

Care for Life

KPJhealthcare
A KEMPEL company

InBody Screening

Offers a more comprehensive and accurate assessment of your health compared to traditional methods, by providing detailed insights into your body.

RM
50



Body Fat Mass & Percentage



Segmental Body Analysis



Total Body Water



Visceral Fat Level



Muscle Mass



Nutrition Recommendation



For further inquiries, kindly call us

085-649 999

*Terms & Conditions Applied

Price stated above are exclusive of 6% SST. A 6% SST is applicable to Non-Malaysian patients.

Care for Life

KPJhealthcare
A KPJ Company

Effective January 2026

Health Screening Packages

KPJ Miri
Specialist Hospital

EXECUTIVE HEALTH SCREENING

- Medical Report Review by Medical Officer
- Blood Pressure Check
- Weight & Height
- Chest X-Ray
- ECG (Electrocardiogram)
- Blood Grouping
- Complete Blood Count
- Renal Function
- Liver Function
- Hepatitis A Screening
- Hepatitis B Screening
- Thyroid Stimulating Hormone
- Urinalysis
- Lipid Profile
- Glucose
- HbA1c
- Rheumatoid Factor

**RM
325**

DELUXE MALE

- Medical Report Review by Medical Officer
- Blood Pressure Check
- Weight & Height
- ECG (Electrocardiogram)
- Blood Grouping
- Complete Blood Count
- Renal Function
- Liver Function
- Hepatitis A Screening
- Hepatitis B Screening
- Thyroid Stimulating Hormone
- Urinalysis
- Lipid Profile
- Glucose
- HbA1c
- Rheumatoid Factor
- VDRL (Syphilis Test)
- Ultrasound (Abdomen + Pelvis)
- Tumor Markers**
 - AFP
 - CEA
 - CA19.9
 - PSA

**RM
540**

DELUXE FEMALE

- Medical Report Review by Medical Officer
- Blood Pressure Check
- Weight & Height
- ECG (Electrocardiogram)
- Blood Grouping
- Complete Blood Count
- Renal Function
- Liver Function
- Hepatitis A Screening
- Hepatitis B Screening
- Thyroid Stimulating Hormone
- Urinalysis
- Lipid Profile
- Glucose
- HbA1c
- Rheumatoid Factor
- VDRL (Syphilis Test)
- Ultrasound (Abdomen + Pelvis)
- Tumor Markers**
 - AFP
 - CEA
 - CA19.9
 - CA15.3
 - CA125

**RM
560**

Price stated above are exclusive of 6% SST. A 6% SST is applicable to Non-Malaysian patients.

Care for Life

KPJhealthcare
A KEMAS Company

Basic Health Screening Package

- Medical Report Review with Medical Officer
- Blood Pressure Check
- Weight and Height
- Complete Blood Count
- Renal Function
- Liver Function
- Blood Sugar Screening
- Lipid Profile
- Urinalysis

RM85

Optional add-on

Complete Male Cancer Marker
PSA, CEA, AFP, CA19.9

RM100

Complete Female Cancer Marker
CEA, AFP, CA19.9, CA125, CA15.3

RM125

For further inquiries, kindly call us at
085-649 999

Terms and Conditions Applied

Price stated above are exclusive of 6% SST. A 6% SST is applicable to Non-Malaysian patients.

Care for Life

KPJhealthcare
A KPJ Company

Pre-Marital Screening Packages

Female Screening:

- Medical Officer Consultation
- Thalassemia Screening
- Blood Group
- HIV Screening
- Hepatitis B Screening
- VDRL (Syphilis Test)
- Glucose
- Urinalysis
- Rubella IgG

RM188

Male Screening:

- Medical Officer Consultation
- Thalassemia Screening
- Blood Group
- HIV Screening
- Hepatitis B Screening
- VDRL (Syphilis Test)
- Glucose
- Urinalysis
- Total Cholesterol

RM158



For further inquiries, kindly call us at

085-649 999

 KPJ Miri Specialist Hospital
 www.kpjhealth.com.my/miri

 [kpjmiriofficial](https://www.instagram.com/kpjmiriofficial)
 [kpjmiri_official](https://twitter.com/kpjmiri_official)

Terms and Conditions Applied

Price stated above are exclusive of 6% SST. A 6% SST is applicable to Non-Malaysian patients.

Care for Life

KPJhealthcare
A KEMAS Company



Pre-Employment Medical Checkup Package

CHARGE CODE: 08600025

- Report Review by OHD
- Vital Signs (BMI, BP, Vision Acuity)
- Chest X-Ray
- Urinalysis
- Haemoglobin

RM 100

For further inquiries / to book
an appointment



Health Screening Unit
016 380 3889



General / Emergency Line
085 649 999

*EFFECTIVE JANUARY 2024

Price stated above are exclusive of 6% SST. A 6% SST is applicable to Non-Malaysian patients.

Care for Life

KPJhealthcare
A KEMAS Company

PRE-UNIVERSITY STUDENT MEDICAL CHECKUP

Basic Student Medical Checkup

RM85

- Medical Officer Consultation and Report
- Vital Signs Observation (BP, Vision, BMI)
- Chest X-Ray
- Urinalysis

Pre-University Student Medical Check-up 1

RM160

- Medical Officer Consultation and Report
- Vital Signs Observation (BP, Vision, BMI)
- Chest X-Ray
- Urinalysis
- HIV Screening
- Syphilis Test
- Hepatitis B Screening
- Hepatitis C Screening
- Urine Drug Opiates
- Urine Drug Cannabinoids

Comprehensive Student Medical Check-up

RM180

- Medical Officer Consultation and Report
- Vital Signs Observation (BP, Vision, BMI)
- Chest X-Ray
- Urinalysis
- HIV Screening
- Syphilis Test
- Hepatitis B Screening
- Hepatitis C Screening
- Urine Drug Opiates
- Urine Drug Cannabinoids
- Urine Amphetamine
- Malaria Screening

For further inquiries, kindly call us at:
085 - 649 999

Price stated above are exclusive of 6% SST. A 6% SST is applicable to Non-Malaysian patients.

*Effective September 2025

KPJ Miri
Specialist Hospital

OFFSHORE Medical Checkup PACKAGE

Package Code : 08600087

Package Includes:

- Medical Report Review with PETRONAS Approved Medical Examiner
- Audiometry
- Chest X-Ray
- Full Blood Count
- Blood Group
- Glucose Screening
- Renal Profile
- Lipid Profile
- Urine Drug Test
- Urinalysis
- Spirometry Test

RM350



Latest addition to Petronas AME!

Dr. Bong Ji Yuan

Resident Medical Officer
MD (CSMU), CHIA, TTT, OHD (DOSH)

- Certified OSH Doctor
- Petronas and MPM AME
- Certified OELK Doctor
- Approved Medical Practitioner for Marine
- Certified Medical Review Officer

For further inquiries / to book an appointment

Health Screening Unit
016 380 3889

General / Emergency Line
085 649 999

- * No stamp/chop required for medical form
- * Same day report

kpjhealth.com.my/miri

Price stated above are exclusive of 6% SST. A 6% SST is applicable to Non-Malaysian patients.

Care for Life

KPJhealthcare
A KEMAS Company

OEUK

Medical Checkup PACKAGE

Package code: 08600130

Package Includes:

- Medical Report & Review with OHD
- Audiometry
- Spirometry Test
- Full Blood Count
- Blood Group
- Glucose Screening
- Renal Profile
- Lipid Profile
- Urinalysis

RM
280



Dr. Bong Ji Yuan

Resident Medical Officer
MD (CSMU), CMIA, TTT, OHD (DOSH)

- Certified OSH Doctor
- Petronas and MPM AME
- Certified OEUK Doctor
- Approved Medical Practitioner for Marine
- Certified Medical Review Officer



Health Screening Unit
016 380 3889



General / Emergency Line
085 649 999

Price stated above are exclusive of 6% SST. A 6% SST is applicable to Non-Malaysian patients.

Care for Life

KPJhealthcare
A KEMH Company

Charge Code: 08600119

Full Cancer Screening Blood Test Package for HIM

- ✓ CEA
- ✓ CA19.9
- ✓ PSA
- ✓ Free PSA
- ✓ AFP
- ✓ Epstein-Barr Virus VCA IgA
- ✓ Beta-hCG

**RM
250**



For further inquiries, kindly call us

085-649 999

**Terms & Conditions applied*

Price stated above are exclusive of 6% SST. A 6% SST is applicable to Non-Malaysian patients.

Care for Life

KPJhealthcare
A KEMH Company

Charge Code: 08600118

Full Cancer Screening Blood Test Package **for HER**

- ✓ CEA
- ✓ CA19.9
- ✓ CA125
- ✓ CA15.3
- ✓ AFP
- ✓ Epstein-Barr Virus VCA IgA

**RM
210**



For further inquiries, kindly call us
085-649 999

**Terms & Conditions applied*

Price stated above are exclusive of 6% SST. A 6% SST is applicable to Non-Malaysian patients.

Care for Life

KPJhealthcare
A KEMH Company

Atopy Allergy Test

Tired of Sneezing & Itchy Skin? Find Out What's Causing It

- | | | |
|---------------------------|----------------------|--|
| • Bermuda grass | • Mould mix 1 | • Crab |
| • Timothy grass | • Honey bee venom | • Shrimp, pacific/prawn |
| • Grass mix 5 | • Cockroach, German | • Lobster |
| • Acacia | • Wheat flour | • Duck meat |
| • Latex | • Gluten | • Beef, cooked |
| • Oil palm | • Egg white | • Pork, cooked |
| • D.pteronyssinus | • Milk | • Chicken |
| • D. farinae | • Alpha-lactalbumin | • Lamb |
| • D. microceras | • Beta-lactoglobulin | • Cheddar cheese |
| • T.putrescentiae | • Casein, cow's milk | • Tomato |
| • G. domesticus | • Chocolate | • Garlic |
| • B. tropicalis | • Peanut | • Strawberry |
| • Kapok | • Hazelnut | • Kiwi |
| • Feather mix 1 | • Almond | • Shellfish mix 1 |
| • Bovine, BSA | • Baker's yeast | • Coffee |
| • Horse epithelium | • Glutamate | • Cross-reactive carbohydrate determinants |
| • Dog hair and epithelium | • Codfish | |
| • Cat epithelium | • Tuna | |
| • Candida albicans | • Salmon | |

- Price stated **EXCLUDE** doctor and specialist fee.
- The recommended age for this test is 2 years old and above.
- The method of test is by taking blood sample.
- Test result TAT is within 5 to 7 working days.

For further inquiries, kindly call us at
085-649 999

RM 460

**detects for 54 allergens*

Chargecode: 08800045

Terms and Conditions Apply

Price stated above are exclusive of 6% SST. A 6% SST is applicable to Non-Malaysian patients.

Care for Life

KPJhealthcare
A KEMH Company



Family Planning Implanon

RM700

- ✓ Lasts up to 3 years
- ✓ Breastfeeding-friendly
- ✓ Low maintenance
- ✓ Fertility resumes upon removal

Our Obstetricians & Gynaecologists

Book an appointment today!

📞 085 - 649 999 (Dr. Aida)

🕒 014 - 555 8262 (Dr. Wong)



Dr. Aida Esa
Consultant Obstetrician & Gynaecologist
MBBS (MALAYA), MOC (MALAYSIA)



Dr. Wong Lee Leong
Consultant Obstetrician & Gynaecologist
MD (USM), MRCOG (UK), FRCOG (USA),
F.MAS (INDIA)

Terms and Conditions applied

Price stated above are exclusive of 6% SST. A 6% SST is applicable to Non-Malaysian patients.

Care for Life

KPJhealthcare
A KEMH Company

Laparoscopic Bilateral Tubal Ligation (BTL)

A Safe, Permanent Birth Control Option

Package Code: 08800023

RM **6,999***

Package Includes

- Admission Fee
- Ward Charges
- Discharge Medication
- Surgical Fee - Consultant Obstetrician & Gynaecologist
- Anaesthetist Fee
- Operation Theatre Charges
- Standard Surgical Consumables & disposable instruments
- Post-Op Medications & Pain Relief
- Routine Nursing Care - includes vital signs monitoring

Package Excludes

- Any additional procedures (e.g. ovarian cyst removal)
- Costs due to complications or extended stay
- Conversion to open surgery (laparotomy)
- ICU care, blood transfusions, emergency treatment
- Lab tests or histopathology
- Non-standard medication or take-home items



Dr. Wong Lee Leong
Resident Consultant
Obstetrician & Gynaecologist
Laparoscopic Surgeon
MD (USM), MRCOG (UK),
FACOG (USA), F.MAS (INDIA)

📞 085-649 999

📞 014-555 8282

*Terms & Conditions Applied

Price stated above are exclusive of 6% SST. A 6% SST is applicable to Non-Malaysian patients.

Care for Life

KPJhealthcare
a KEMAS Company

HYSTEROSCOPY PACKAGE

is a procedure used to examine the inside of the uterus (womb) using a thin, lighted tube called a hysteroscope. It's done for a **diagnostic** or **surgical** reasons.



RM 4,888*

TERMS & CONDITIONS

- ✓ Package price applicable for cash-paying only
- ✓ KPJ Miri reserves the rights to amend or change the package price, and terms and conditions without prior notice

PACKAGE INCLUDES

- ✓ Registration Fee
- ✓ Surgeon & Anaesthetist Fee
- ✓ Procedure Fee
- ✓ Double Bedded Room (Day Case)
- ✓ Histopathological Examination
- ✓ Take Home Medication

by our Obstetricians & Gynaecologists



Dr. Aida Esa
Resident Consultant
Obstetrician & Gynaecologist



Dr. Wong Lee Leong
Resident Consultant
Obstetrician & Gynaecologist
Laparoscopic Surgeon

☎ **085 - 649 999**
DR. AIDA ESA

☎ **014 - 555 8262**
DR. WONG LEE LEONG

Price stated above are exclusive of 6% SST. A 6% SST is applicable to Non-Malaysian patients.

Care for Life

KPJhealthcare
A KEMAS Company

FEMALE WELLNESS PACKAGE

Chargecode: 08900015

RM150 ONLY

Package Includes:

- ✓ Registration Fee
- ✓ Consultation Fee
- ✓ Fibroid / Cysts Scan
- ✓ Consumable
- ✓ Pelvic Examination

Dr. Wong Lee Leong

Resident Consultant
Obstetrician & Gynaecologist
Laparoscopic Surgeon

MB (UK), MRCOG (UK), FRCOG (UK), FRCGS (UK)

Level 2, Clinic 5

+6 014 - 535 8242



For further inquiries, kindly call us
085-649 999

**Terms & Conditions Applied*

Price stated above are exclusive of 6% SST. A 6% SST is applicable to Non-Malaysian patients.

Care for Life

KPJhealthcare
A KEM Company

Cervical Screening Package

Package Code: 08700008

RM **300**

Effective June 2025

Cervical cancer is the third most common cancer among Malaysian women, but early screening saves lives. A Pap smear detects abnormal cells early, ensuring better prevention and treatment.

Package includes



Pap Smear (Liquid-Based Cytology) + HPV DNA Test



Consultation with Obstetrician & Gynaecologist
(Dr. Wong Lee Leong)



085 - 649 999



014 - 555 8262

Dr. Wong Lee Leong

Resident Consultant
Obstetrician & Gynaecologist
Laparoscopic Surgeon

Terms and Conditions Applied

MD (USM), MRCOG (UK), FACOG (USA), F.MAS (INDIA)



Price stated above are exclusive of 6% SST. A 6% SST is applicable to Non-Malaysian patients.

Care for Life

KPJhealthcare
A KEMAS Company

Breast Cancer Screening

Breast cancer is the most common form of cancer affecting women in Malaysia. Early detection through regular screening plays a crucial role in improving treatment outcomes and saving lives.

Package Code: 08400002

Mammogram




RM140

Breast Ultrasound

RM150

Package Code: 08400001

Package is inclusive of

-  Radiologist Reporting Fee
-  Procedure Fee
-  Registration Fee

For further inquiries, kindly call us

085-649 999

**Terms and Conditions Applied*

Price stated above are exclusive of 6% SST. A 6% SST is applicable to Non-Malaysian patients.

Care for Life

KPJhealthcare
A KEMH Company



Early Detection
Saves Lives

KPJ Miri
Specialist Hospital



Lung cancer is the
second most common
cancer in Malaysia.



Package Includes:

- ✓ Registration Fee
- ✓ Review & consultation by Medical Officer
- ✓ Radiologist Report
- ✓ CT Scan Lung with HRCT whole lung

Recommend for individuals with the following risk factors:



Age 50+ smoker,
or an ex-smoker



History of chronic lung
diseases (e.g. COPD,
chronic bronchitis)



Family members who
smoke



Family history of
lung cancer

Low-Dose Chest Screening
(LDCT)

RM
350.00 only

Safe • High Resolution • Low Radiation • Quick & Convenient

For further inquiries, kindly call us: ☎ 085-649 999

Price stated above are exclusive of 6% SST. A 6% SST is applicable to Non-Malaysian patients.

Care for Life

KPJhealthcare
A KPJ Company

HPV Vaccination

(Human Papillomavirus)

What is HPV?

Human papillomavirus (HPV) is a very common viral infection that can cause cervical cancer in women and genital warts in men and women.

Who should get HPV Vaccine?

Individuals (including boys and girls) aged between 9 to 45 years old.

RM580 per dose

**Effective 8th March 2024*



☎ 085 - 649 999

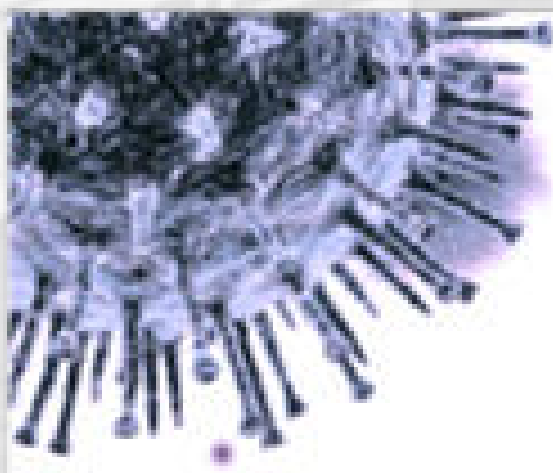
Terms and Conditions

- Price stated above is for vaccine only.
- Price stated above does not include doctor or specialist fee.
- Additional charges may be incurred for treatments, lab test, investigation and diagnostic imaging test IF REQUIRED.
- KPJ Miri Specialist Hospital reserves the right to amend the price and terms and conditions at any time without prior notice



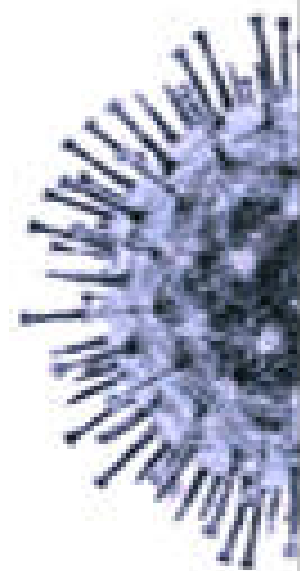
Tax reliefs available under vaccination expenses for self, spouse and child.

Price stated above are exclusive of 6% SST. A 6% SST is applicable to Non-Malaysian patients.



INFLUENZA VACCINATION PACKAGE

The flu vaccine is the most effective way to prevent the flu and its serious complications. Annual vaccination is recommended for everyone aged 6 months and older, especially those at higher risk.



Package Includes

- Nursing and Injection Procedure
- Registration Fee

RM
65

****Effective on August 2025**

For further inquiries, kindly call us at:

085 - 649 999

Terms and Conditions applies

Price stated above are exclusive of 6% SST. A 6% SST is applicable to Non-Malaysian patients.

Normal Delivery

Charge Code: 08700011

Package Price Starts From

RM 3,999*

Package Includes

- | | |
|--|--|
|  Consultation & Procedure Fee - O&G, Paeds & Anaesthetist |  Newborn Vaccination |
|  2 Days 1 Night (Meal Provided) |  Newborn Screening |
|  Breastfeeding Support |  Blood Test |
|  Delivery Suite Fee |  Nursing Special Care |
|  Essential Newborn Screening - Paeds |  Easy Chair for Companion |

Package Excludes

- | | |
|---|---|
|  Phototherapy |  Premature Delivery or Baby With Complications |
|  Extra Stay |  Take Home Medicine |
|  Any Other Extra Charges | |

For further inquiries, kindly call us

085-649 999

*Terms & Conditions Applied

Care for Life

KPJhealthcare
A KODK Company

Caesarean Delivery

Charge Code: 08700015 (MAT)
: 08700012 (OT)

Package Price Starts From

RM 8,999*

Package Includes

- | | |
|--|--|
|  Consultation & Procedure Fee - O&G, Paeds & Anaesthetist |  Newborn Vaccination |
|  3 Days 2 Nights (Meal Provided) |  Newborn Screening |
|  Breastfeeding Support |  Blood Test |
|  Operation Theatre Fee |  Nursing Special Care |
|  Essential Newborn Screening - Paeds |  Easy Chair for Companion |

Package Excludes

- | | |
|---|---|
|  Phototherapy |  Premature Delivery or Baby With Complications |
|  Extra Stay |  Take Home Medicine |
|  Any Other Extra Charges | |

For further inquiries, kindly call us

085-649 999

*Terms & Conditions Applied

Care for Life

KPJhealthcare
A KODAK Company



Effective August 2025

KPJ Miri
Specialist Hospital

Phototherapy Package

RM 1,398*

Package inclusive of:



Consultation



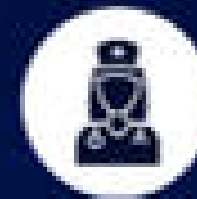
Phototherapy
Treatment



3 Days 2 Nights



Blood
Bilirubin Test



Nursing
Special Care

Package Code: 08700013

1ST NIGHT

RM 799*

Package Code: 08700014

2ND NIGHT

RM 599*

Our Paediatricians:



Dr. Wong Tiong Hien
Paediatrician
MD (USM), MRCPCH (UK)

0115 757 6586



Dr. Philip Ling Hung Toh
Paediatrician
MBBS (AUS), MRCPCH (UK), Postgrad Dip
Food Nutrition (Boston), Early Nutrition
Specialist (LMU), Diploma Dermatology (RCH)

0111 503 1314



*Terms & Conditions Applied

For further inquiries, kindly call us at:
085 - 649 999

Price stated above are exclusive of 6% SST. A 6% SST is applicable to Non-Malaysian patients.

Care for Life

KPJhealthcare
A KEMH Company



CHILDREN VACCINE PROMOTION

儿童疫苗优惠

6 IN 1 VACCINE 六合一疫苗	RM 165 / dose
PNEUMOCOCCAL VACCINE — VAXNEUVANCE 肺炎链球菌疫苗	RM 270 / dose
MEASLES, MUMPS & RUBELLA (MMR) VACCINE	RM 65 / dose
JAPANESE ENCEPHALITIS VACCINE 日本脑炎疫苗	RM 160 / dose
ROTAVIRUS VACCINE — ROTARIX 轮状病毒疫苗	RM 190 / dose (2 doses per course)
— ROTATEQ	RM 115 / dose (3 doses per course)
INFLUENZA VACCINE 流感疫苗	RM 50 / dose
CHICKEN POX VACCINE — SKYVARICELLA 水痘疫苗	RM 125 / dose
— VARIVAX	RM 210 / dose
MENINGOCOCCAL VACCINE 脑膜炎双球菌疫苗	RM 145 / dose
HEPATITIS A JUNIOR VACCINE 儿童甲型肝炎疫苗	RM 115 / dose

**effective 15th March 2025*

Terms & Conditions

条款&条件

- Promotional prices stated EXCLUDE consultant's fee and nursing procedures
以上优惠价不包括医生收费和医疗处理费用
- KPJ Miri Specialist Hospital reserves the right to amend the prices and the terms and conditions
美里KPJ专科医院保留可随时和无需提前通知的情况下修改此配套任何条款和条件的权力。价格以及配套的有效期限

Price stated above are exclusive of 6% SST. A 6% SST is applicable to Non-Malaysian patients.



KPJ Miri
Specialist Hospital

OCCUPATIONAL THERAPY

RM150
per
session

EVERY SATURDAY

8:30AM - 12:30PM

2:00PM - 5:00PM

Services includes:

- ✓ Registration
- ✓ ADL Assesment
- ✓ Occupational Therapy Assesment
- ✓ Fine Motor Training
- ✓ Sensory Intergration
- ✓ Paediatric (early intervention)
- ✓ Sensory Simulation
- ✓ Sensory Desensitization
- ✓ Occupational Therapy Treatment

Our Paediatricians



Dr. Wong Tiong Hien
MD (USM), MRCPCH (UK)



Dr. Philip Ling Hung Toh
MBBS (AIMST), MRCPCH (UK),
Postgrad Dip Paed Nutrition
(Boston), Early Nutrition
Specialist (UMJ), Diploma
Dermatology (RCPI)

Book an appointment today!

📞 **085-649 999 ext. 402**



Price stated above are exclusive of 6% SST. A 6% SST is applicable to Non-Malaysian patients.

Care for Life

KPJhealthcare
A KEMAS Company

Eye Screening

- Visual Acuity
- Anterior Segment Examination
- Intraocular Pressure
- Fundus Examination
- Consultation by Ophthalmologist

RM
120*



Dr. Matthew Tong Jong Haw
Resident Consultant
Ophthalmologist
MD (UMS), MMED (USM)

Terms & Conditions:

- Package is not inclusive of special equipment unless specified.
- Package is not inclusive of medical supplies.
- KPJ Miri reserves the rights to amend or change the package price, and terms and conditions without prior notice.

Schedule an appointment with
KPJ Miri Specialist Hospital today!

 **085 - 649 999**
General / Emergency Line

 **014 - 993 1588**
WhatsApp

Price stated above are exclusive of 6% SST. A 6% SST is applicable to Non-Malaysian patients.

Care for Life

KPJhealthcare
A KEMH Company

Effective August 2025

KPJ Miri
Specialist Hospital

Eye Screening Packages

RM 222*



Cataract Screening

- Visual Acuity
- Intraocular Pressure
- Dilated Fundus Examination
- Eye Biometry
- Consultation by Ophthalmologist

RM 222*



Diabetic Retinopathy Screening

- Visual Acuity
- Intraocular Pressure
- Dilated Fundus Examination
- Fundus Picture
- Optical Coherence Tomography (OCT)
- Consultation by Ophthalmologist

Ophthalmologists



Dr. Matthew Tong Jong Haw
Resident Consultant
Ophthalmology
MD (JMS), MMED (USM)



Dr. Alisa Victoria Koh
Resident Consultant
Ophthalmology & Vitreoretinal Surgeon
M.D. (USM), M. MED OPHTHAL (USM),
CCFT VITREORETINAL (MOH MAL),
FELLOWSHIP IN RETINA (AUSTRALIA)

**Schedule an appointment with
KPJ Miri Specialist Hospital today!**

 **014 - 993 1588**

Dr. Matthew Tong Jong Haw

 **085 - 649 999**

Dr. Alisa Victoria Koh

Terms & Conditions:

- Package is not inclusive of special equipment unless specified.
- Package is not inclusive of medical supplies.
- KPJ Miri reserves the rights to amend or change the package price, and terms and conditions without prior notice.

Price stated above are exclusive of 6% SST. A 6% SST is applicable to Non-Malaysian patients.

Care for Life

KPJhealthcare
A KEMAS Company

Cataract Surgery Package

from
RM3,388 ++
per eye



Dr. Matthew Tong Jong Haw
*Resident Consultant
Ophthalmologist / Eye Specialist*



Dr. Alisa Victoria Koh
*Resident Consultant
Ophthalmologist & Vitreoretinal Surgeon*

Terms and Conditions

- Package inclusive of surgical fees and medical supplies.
- Price stated is for Monofocal Lens only.
- This package does not include follow-up appointment after surgery and pre-operative assessment.
- This package EXCLUDES any medical and surgical emergencies and add-ons.
- This package is exclusively for self-paying patients only.
- KPJ Miri Specialist Hospital reserves the right to amend or change the terms and conditions without prior notice.

Effective August 2025

 **+6014 993 1588**
Dr. Matthew Tong Jong Haw

 **+6085 649 999**
Dr. Alisa Victoria Koh

Price stated above are exclusive of 6% SST. A 6% SST is applicable to Non-Malaysian patients.

Care for Life

KPJhealthcare
A KEMAS Company

EARLY DETECTION SAVE LIVES

ENDOSCOPY PACKAGE



OGDS / Gastroscopy	from RM650*
Colonoscopy	from RM999*
Colonoscopy + Gastroscopy	from RM1,499*

Package Includes :

- Day Care Recovery
- Procedure Fee
- Endoscopy Room Utilization

Package Excludes :

- Extra Sedation
- Take Home Medication
- Laboratory Investigation
- Pre-Screening Consultation Fee
- Pre-Screening Measurements and Medications
- Special Treatment
- Extra Stay
- Post Operation Review



Dr. Pui Wei Chieng
Resident Consultant
General Surgeon



Dr. Kenneth Voon Kher Ti
Sessional Consultant
General Surgeon

For more inquiries / to book an appointment,
kindly call us at 085-649 999

Price stated above are exclusive of 6% SST. A 6% SST is applicable to Non-Malaysian patients.

CIRCUMCISION PACKAGE

PAKEJ BERKHATAN

Package Code: 08800005

RM

1000*

Effective August 2025

Package inclusive of :

- Local Anesthesia
- Procedure Fee

Package excludes :

- Consultation Fee
- Extra Sedation / General Anesthesia
- Take Home Medication

Terms & Conditions

1. Additional charges may incur for consultation, extra sedation/general anesthesia, medications, investigations or treatment (if required).
2. This package is applicable for self-paying patients only. (Cash, Credit, Debit, SarawakPay).
3. KPJ Miri Specialist Hospital reserves the right to amend the price, content, terms and conditions of the package at its absolute discretion without prior notice.



DR PUI WEI CHIENG
RESIDENT CONSULTANT GENERAL SURGEON
MBBS (JAMU), MRCS (ED), DEGENSURG (UKML), CMGA (NOSH)

📞 085 - 649 999

📞 010 650 8782

Price stated above are exclusive of 6% SST. A 6% SST is applicable to Non-Malaysian patients.

PACKAGE CODE: 08800009

ADULT TONSILLECTOMY PACKAGE

from
RM3,888⁺⁺

PACKAGE INCLUDES

- Day care stay
- General Anesthesia
- Specialist procedure fee
- Anesthesiologist fee

PACKAGE EXCLUDES

- Pre-operative consultation and follow-up consultation fee
- Emergencies, medical or surgical complications
- Any complications during procedure will render this package void
- Blood test

General / Emergency Line

 **085-649 999**

* package applicable for self-paying patients only

Price stated above are exclusive of 6% SST. A 6% SST is applicable to Non-Malaysian patients.

Care for Life

KPJhealthcare
a KPJ Company

TERMS & CONDITIONS

- KPJ Miri Specialist Hospital reserves the rights to amend the prices, content, and Terms & Conditions of the packages in this catalogue without prior notice.
- **The prices stated in this catalogue are exclusive of 6% SST.** A 6% SST will be applicable to Non-Malaysian starting from 1st September 2025.
- Prices stated in the packages are only for **self-paying patients** unless stated otherwise.
- Please be informed of what are included and excluded in the package before proceeding with the procedure.
- Shall there be any abnormalities found during health screening, please consult our Specialists.
- Additional charges may be incurred for treatments, lab test, investigation and diagnostic imaging if required.
- Packages in this catalogue are **as at 5th January 2026**. Shall there be any updates or changes made in the packages after the stated date, the hospital will refer to the updated packages and its changes will be applied immediately.